



EVENTS *at* GERMAN GYMNASIUM
KING'S CROSS



150 YEARS IN THE MAKING

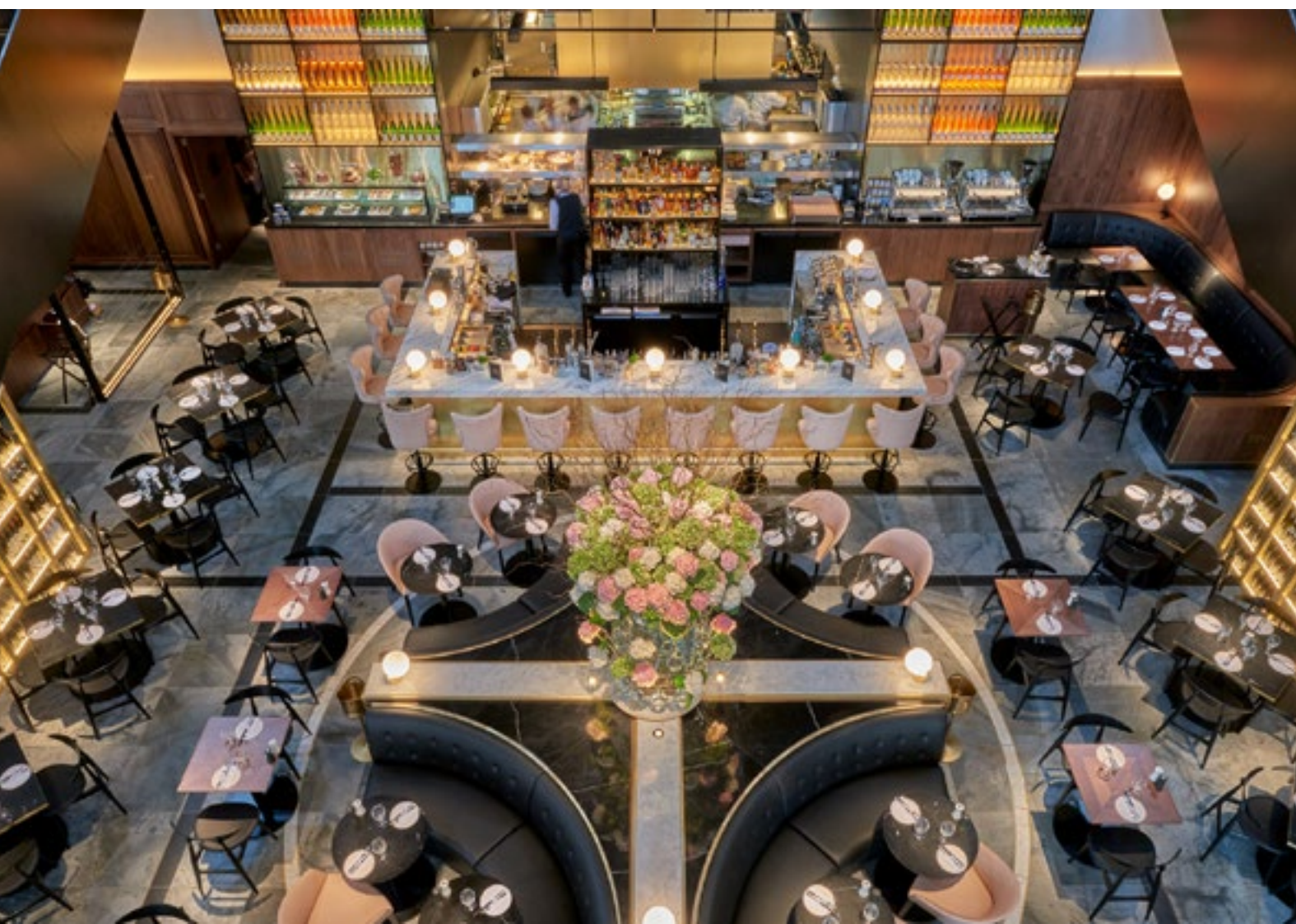
German Gymnasium is D&D London's newest opening in the regenerated heart of Kings Cross. This amazing building was Britain's first purpose-built gym and was the site for the indoor events at the first Olympic Games, held in London back in 1866.

Sitting in a prime spot between King's Cross and St Pancras Stations, the most exciting emerging area of London in terms of new development, this beautiful Grade II listed building has now been restored to its former glory.

Long forgotten sports were practised here, including Indian club swinging and broadsword practice as well as the introduction of women's exercise which was considered to be a forward-thinking approach at the time! The vast laminated timber roof trusses, with their original cast iron hooks from which budding Olympians swung from ropes, are still in place today.

Home to a ground floor Grand Café with vast outdoor terrace, a contemporary upper floor restaurant and Meister bar with a semi private dining space.

With a unique blend of space and intimacy, architectural features and the finest cuisine, this versatile new venue is ideal for any event.



PRIVATE DINING

On the upper floor, our sophisticated semi-private dining room boasts natural light and showcases a bespoke table designed to complement the venues original features.

Enjoy the finest Mittel-European cuisine with views across the upper floor, and admire the breath taking roof structure.

In the evenings, low-key lighting creates an intimate, inviting and warm atmosphere for private conversation, dining and drinking until the early hours.



Capacities

32 guests

*Seated breakfast, lunch and dinner
(on two tables)*

50 guests

Standing reception





GROUP DINING

Whether the bustling atmosphere of the Grand Café, open vista of our outdoor terraces or stunning views from the upper floor, German Gymnasium has it all for groups of up to 50 guests. Sample the delicacies of the Mittel-European inspired menu in London's most exciting new neighbourhood.

Capacities

From 10 to 50 guests
Outdoor Terrace

Up to 70 guests seated



BAR GROUPS

Overlooking the stunning Grand Café, the balcony provides the perfect backdrop for a drinks reception for up to 40 guests. Enjoy the innovative cocktail menu, including the multi-sensory concept, Le Whaf, a special carafe that vaporises cocktails turning them into dramatic clouds. The wine list showcases niche German, Austrian and Hungarian labels including Sekt, the authentic German sparkling wine. And, of course, a vast selection of draught and bottled beers including our very own KX Pilsner brewed solely for German Gymnasium.

Capacities

40 guests
Standing





UPPER FLOOR

The upper floor of German Gymnasium (made up of the Restaurant, Meister Bar and semi-private dining room) can be hired exclusively, for a seated lunch or dinner for up to 150 guests, or a standing reception for up to 250. Benefitting from its own private entrance, the wraparound gallery is the perfect vantage point from which to drink in the atmosphere of the Grand Café and feature bar below.

Capacities

150 guests

Seated lunch and dinner

250 guests

Standing reception



EXCLUSIVE HIRE

On a finite number of occasions, German Gymnasium can be hired exclusively for breakfast, lunch, dinner or anything in between! Our versatile, ideally located venue is equally suited to a celebratory dinner dance, corporate standing reception, Bar/Bat Mitzvah or a business breakfast.

The space offers attractive flexibility should you wish to transform it completely or simply keep the style of the interior as it is.

Our events team are experienced party planners there to assist with your enquiry from concept through to the day itself, making your event one to remember.



Capacities

250 guests

Seated lunch and dinner

500 guests

Standing reception



